

she wears many hats

Le Brunch De Chapeaux Raises Funds For The Autism Community Network

By Jake Gaines | Photography by Greg Harrison

THE SETTING: Over 530 San Antonio attendees supported the 16th annual Le Brunch de Chapeaux benefitting Autism Community Network at The Argyle, the most beautiful and popular luncheon in the city according to many. Mistress of ceremonies Ursula Pari of KSAT-TV officiated the crowd and guest speaker Michelle Harrison, parent liaison for Alamo Heights Independent School District Special Education, shared her story to a sold-out audience of autism's impact on her family with candor, humility and grace.

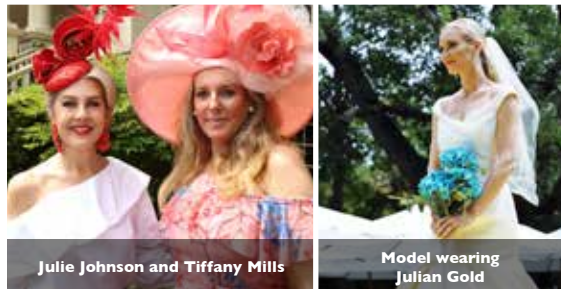
THE STYLE: The event company, Cloche Designs, was engaged for the second year and created a beautiful scene inspired by a beloved yellow and green room decorated by Dorothy Draper at The Greenbrier Hotel. The event was infused with special details at every turn, including an invitation suite designed by TradeCraft, featuring original watercolor art by artist Gina Langford. The decor included a stunning treillage backdrop for a floral display of yellow blooms and lemon trees in blue and white chinoiserie containers flanked by champagne towers. Julian Gold showcased dozens of spring and summer fashions with a personal appearance from designer Caroline Constas on the canary yellow runway designed especially for it.

The silent auction featured beautiful art from local artists. French flags were passed to paddles up donors, waived and then returned to spotters in exchange for lemon drop shots and swag bags valued at over \$500 donated by Julian Gold. Guests left with complimentary Supergoop favors also donated by Worth & Associates and Julian Gold.

THE PURPOSE: Event co-chairs Linda Leavitt and Liz Lamoureux helmed raising a net profit of \$167,000 for the organization. Title sponsors were La Brasada Foundation and the Quintanilla family. Raffle donors were Julian Gold, Kelly Wade Jewelers, Lee Michaels Jewelers and Shetler Fine Jewelers. The Autism Community Network provides early, high quality, interdisciplinary diagnoses, and treatment for autism service providers and families affected by autism. 🍷



Triana Grossman, Ashley Weaver and Adriana Grossman



Julie Johnson and Tiffany Mills



Model wearing Julian Gold



Linda Gail Dullnig



Aquila Mendez-Valdez and Tori Johnson



Alayah Benavidez, Kimberly Overby, James Glover, Jennifer Grigby and Maria Hurley



Tiffany Fresher, Liz Lamoureux and Linda Leavitt



Jessica Worth and Kim Lewis



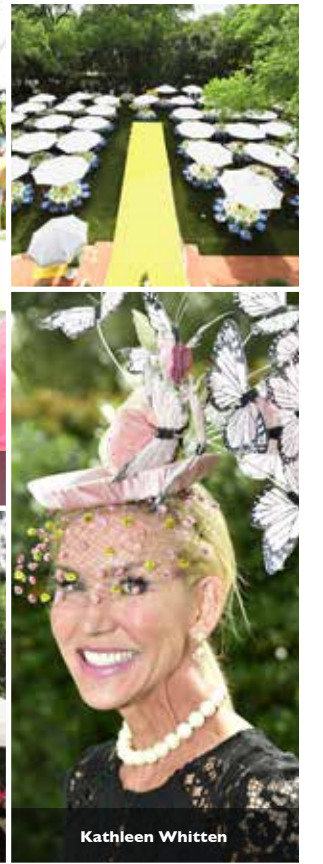
Angel Meyers, Heather de Rojas, Tracee Feik, Amy Garcia, Emily Sytsma, Fabiola Kaase. Seated Ana Leah Montoya, Rita Feik and Pilar Gonzalez



Lily Gretzinger, Krisana Puccio, Kathryn Goertz and Nicole Johnson



Model wearing Julian Gold



Kathleen Whitten



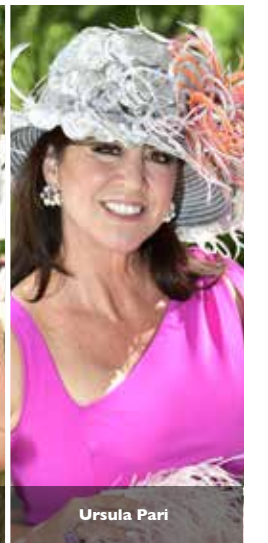
Stacy Schlager, Lee Evans Lee and Nicole McLane



Laura Nell Burton and Christin Gish



Carroll Dorsey Walker and Lauren Haass



Ursula Pari



Shannon Turner and Kelly Fry



Carolina Roberts and Allegra Hawkins t



Stacey Hoyt and Emily McMurray